

Le dichiarazioni contenute nel presente curriculum sono rese ai sensi dell'art. 47 del D.P.R. 28 dicembre 2000, n. 445, "Testo unico delle disposizioni legislative e regolamentari in materia di documentazione amministrativa", effenove srls dichiara, altresì, di essere informato delle sanzioni penali previste dall'art. 76 del D.P.R. suddetto, per le ipotesi di falsità in atti e dichiarazioni mendaci.

effenove srls autorizza il trattamento dei dati personali ai sensi del Decreto Legislativo n. 196 del 30 Giugno 2003, "Codice in materia di protezione dei dati personali".

COMPANY DATA

Company Name	<i>effenove s.r.l.s.</i>
Core Business	film production and 3D visual effects
Indirizzo sede legale	Potenza (PZ) Viale del Gallitello n°90
indirizzo PEC	effenove@arubapec.it
indirizzo mail	info@effenove.it
REA Code Number	PZ-142443
Italian Legal Form	S.r.l.s.
Date of Registration	11.08.2014
V.A.T. Number	01893900769
CEO	ing. Michele Scioscia, SCS MHL 73D 14G 942J mob. 347.8034127

ACTIVITY

2016 - LA FAVOLOSA STORIA DELLA CERTOSA DI PADULA E DELLE SUE GRANCIE

Effenove realized a docu-fiction dedicated to the “Certosa di Padula”, being part of the project “*Servizi innovativi per l’attivazione di reti collaborative, nazionali ed internazionali, per la gestione integrata del sito UNESCO Certosa di Padula* del Comune di Padula (SA) - POR CAMPANIA FESR 2007-2013 - Obiettivo Operativo 1.9”.

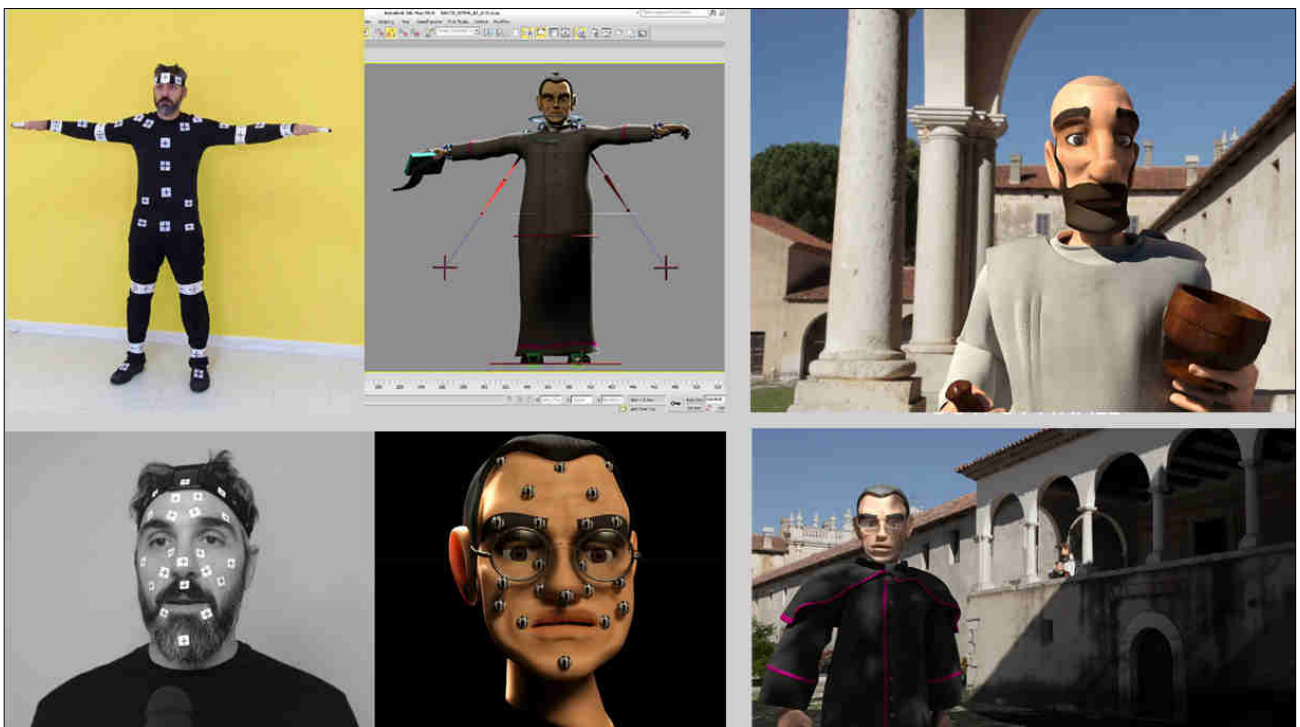
CUSTOMER: Territorio s.p.a.

The Project:

The “Certosa di San Lorenzo a Padula e delle sue grancie” docu-fiction is an animated story based on a mixed narration where two avatars acts as storytellers. Different “languages” are used: comics, 3D animation, drones and traditional shooting.

Tools & Techniques:

- Laser Instrumental survey
- Camera tracking and matching of 3D model to real video
- Photogrammetry to 3D models
- 3D models Digital sculpting, character animation, texturing, lighting (*Autodesk 3ds max 2016, Sitni Sati Fume FX*)
- Full HD rendering production
- Video editing (*Autodesk Composite*)



2016 - LA RICERCA DELLA FORMA. The Genius of Sergio Musmeci

Effenove realized "La ricerca della forma. Il genio di Sergio Musmeci" (directed by Vania Cauzillo, Subject created by Sara Lorusso and Michele Scioscia), documentary based on Sergio Musmeci's life and his project "Basento's bridge". The project won a public funding from Regione Basilicata and Lucana Film Commission public tender focused on the Basilicata Administrative territory and its cultural heritage promotion.

Project Partners e Sponsors:

- MAXXI (museo nazionale delle arti del XXI secolo)
- Asi Consorzio per lo Sviluppo Industriale della Provincia di Potenza
- Ordine degli Ingegneri della Provincia di Potenza
- Consiglio Nazionale degli Ingegneri



MUSEO NAZIONALE
DELLE ARTI
DEL XXI SECOLO



The project: the documentary examine in the deep the lifelong research undertaken by Sergio Musmeci and that led to the Potenza's bridge project. The Engineer went deep through the relation between shape and structure because he was a committed supporter of the biunivocal relation between the context around the endeavour and aesthetic requirements of the building. The bridge realized in Potenza is an extraordinary proof that links the bridge shape to the environmental context and the specific use of the local community. The documentary shows the intellectual effort that he gave generously to realize his first bridge in Basilicata and that nowadays is recognized as national heritage bridge.

Tools & Techniques:

- Professional camera's live shot (Canon C100 e Canon EF 24-70mm f2,8 II S/N 9215001856) and drone shooting and Gopro camera
- Musmeci's bridge 3D modeling (*Autodesk 3ds max 2016, Next Limit Real Flow*) realized starting from a point cloud captured by a Laser Kolida Reflectorless (texturing, lighting, model animation)
- Camera tracking, Full HD rendering

Video editing (*Autodesk Composite*)



2016 - MANUFACTURING TRANSPORT COMPANY- PROMOTIONAL VIDEOCLIP

Effenove took the active role within the promotional video produced by Digital Lighthouse s.r.l. for an primary manufacturing company. It was realized to promote the transport & logistic division of that company.

The project:

creation of 3D modelling and animation to describe the technology functionality, using the Autodesk software.

Tools & Techniques:

- from the Train DWG file to a 3D model animation through a point cloud provided by the customer;
 - high poly 3D model, texturing e lighting.
 - Inverse kinematics mechanical animation and MassFX simulation
-

2016 - Coordinamento per la pubblicazione sul Viadotto del Basento - on going

Effenove is coordinating a publication related to the Musmeci-s bridge (Viadotto sul Basento).

Project Partner:

Ordine degli Ingegneri della Provincia di Potenza



The Project:

the publication is gathering all the personal and emotional aspects of all the intellectual itinerary that led to the bridge erection, through an accurate selection of images and technical, human contribution of some protagonists.

2016 - THE PORTRAIT OF A LAND

Effenove took part in Silvio Giordano's video, produced by APT Basilicata.

The project:

The project is based on the oniric and not traditional depiction of an unconscious landscape where the creation of allegorical faces helps to describe the most touristic cities in Basilicata, through the representation of poetic, strong impacting visual animations.

Tools & Techniques:

- 3D Facial modelling from reality capture (photogrammetry), character animation, texturing, lighting
(Autodesk 3ds Max, Autodesk Recap)
 - Character rigging and animation (IK bones)
-

- Full HD rendering production
- Video editing (*Autodesk Composite*)



2015 - DALLA TERRA ALLA LUNA. La scienza riscopre la Basilicata

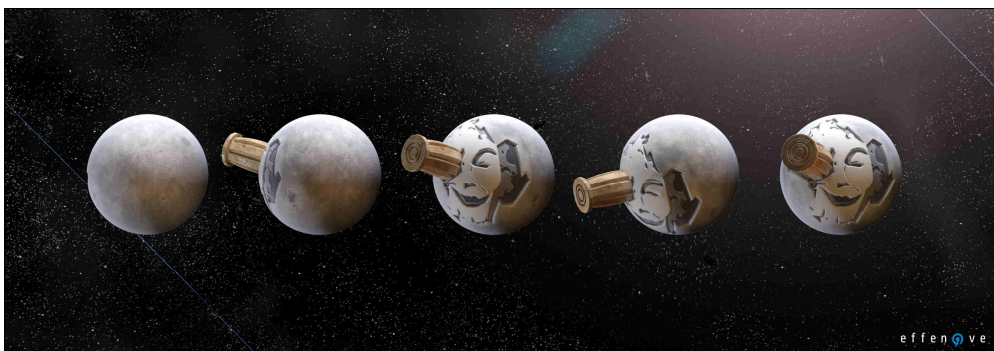
The documentary "*Dalla terra alla luna*" was produced by Liberascienza (Director Vania Cauzillo, screenplay Pierluigi Argoneto). Effenove realized the special effects(VFX) and 3D animation.

The project:

This graphical 3D artistically recalls an artistic journey to discover Basilicata district. The title has a clear reference and quote in "*Le Voyage dans la lune*". The project merged different cultures, technical and humanistic skills: this fusion opened a rarely investigated path in the narration techniques, focusing on the mixture of communication channels and genre.

Tools & Techniques:

- 3D modelling, character animation, texturing, lighting (*Autodesk 3ds Max*)
- Full HD rendering production
- Video editing (*Autodesk Composite*)



2015 - The book: "Basento. Un ponte"

Effenove took part of the publication "*Basento. Un ponte*", EunoEdizioni, LEONFORTE (EN), 2015, written by the assistant professor of architecture USC Victor Jones, and included in the book series "*ápeiron - architettura e ingegneria*" directed by Maurizio Oddo.

2015 - Silvio Giordano's short film animations – closing phase

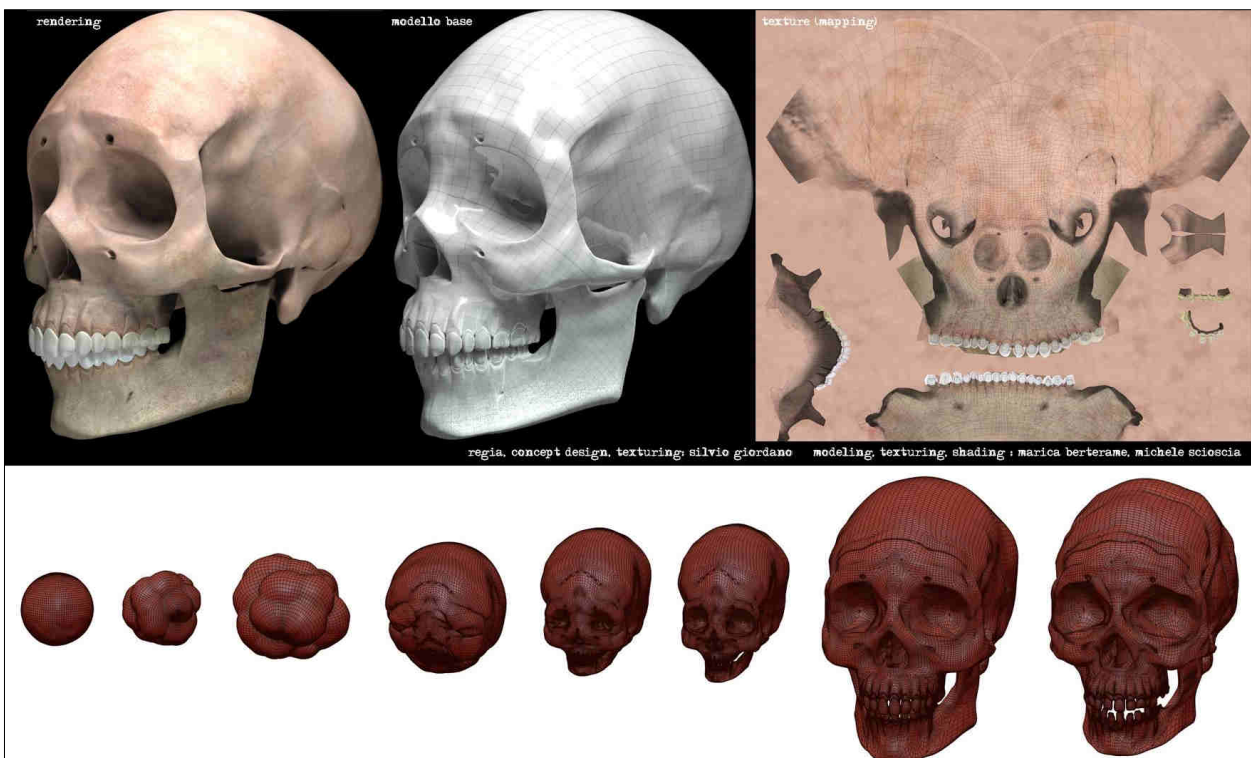
Effenove's realizing a shortfilm directed by the artist **Silvio Giordano**. It's been created a TRIDIMENSIONAL DIGITAL MODEL of organic body parts realized through the reality capture technique and advanced polygonal modeling.

The project:

In this video Morphing technique has been used to create digital models animation and dynamics.

Tools & Techniques:

- 3D modelling, character animation, texturing, lighting (*Autodesk 3ds Max*)
- Full HD rendering production
- Video editing (*Autodesk Composite*)



POTENZA, 31/05/2016

per effenove s.r.l.s.

MICHELE SCIOSCIA (amministratore unico)

Michele Scioscia

effenove s.r.l.s.

via del Gallitello n°90, 85100 POTENZA
P.IVA 01893900769